



PCM

**£1,400**

**\*\*AVAILABLE NOW\*\***

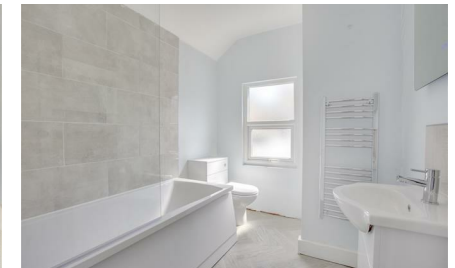
A completely Victorian, two bedroom terraced house, close to High Wycombe's town centre and conveniently located just a few minutes walk of the mainline railway station, making it perfect for those that commute into London. The accommodation comprises; front door to sitting room with feature fireplace, dining room, recently modern fitted kitchen with access to the rear garden, two double bedrooms and modern bathroom. The property also benefits from; UPVC double glazing, original fireplaces and courtyard style rear garden with brick storage shed.

HOLDING FEE: £323.07 (taken off of the deposit)

DEPOSIT: £1,615.38

12 MONTHS TENANCY

- AVAILABLE NOW
- NEW KITCHEN
- UNFURNISHED
- TWO RECEPTION ROOMS
- MODERN RE-DECORATION
- NEW BATHROOM
- WALK OF TOWN & TRAIN STATION
- TWO DOUBLE BEDROOMS



**56 Green Street, High Wycombe, Bucks, HP11 2RE**

Estate Agents ~ Lettings Agents ~ Valuers ~ Independent Mortgage Advisors

